

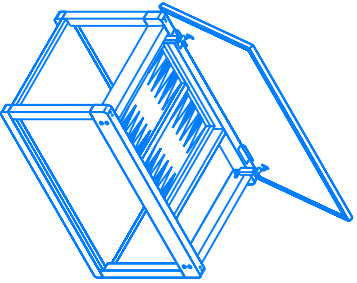
- 4) Run a bead of glue along the rabbet joints in pieces L, M, N, O, P, Q, R, S, T, U, V, W, X, Y, Z. Lay on piece C and nail to L with 1 1/2" finishing nails. Locate M 20" from left hand L and glue end nail C to M with 1 1/2" finishing nails. Pre-drill the hole in M with #8 2" flathed screw with countersink to a depth of 3/8" on a 3/8" drill bit. Repeat for the bottom screws J, drilling in the middle rather than in the ends. Hold up the C, assembly, and screw pieces K to C with eight #8 2" flathed screws, keeping the top edges of L and K flush. Insert piece N between pieces J and screw in place with four #8 2" flathed screws, keeping the top edges of J and N flush. Glue and insert twelve 3/8" wood buttons in the countersunk holes. With a 1/8" drill bit, pre-drill three holes through bottom pieces J, one 2 1/2" from each end and one slightly off center. These holes are to allow attachment of B to J. Countersink on the bottom side to a depth of 3/4" with a 3/8" bit. Glue the 1/4" edge of N and position in piece B. Screw J to B with six #8 1 1/4" flathed screws three each J.
- 5) With a 1/16" drill bit, pre-drill five holes through each D, E, F and G, one 1" from each end, one in the middle, and two between the ends and the middle, drilling from the "outside" edges to the "inside" edges. Glue the "inside" edges, and the ends, and nail through the holes and into pieces A and B with 1 1/4" finishing nails, keeping the edges flush to top of A and B.
- 6) Lay the hinges on piece K, 5" from either end. Mark the hinge locations with a pencil, ensuring that the hinge pin is just over the outside edge. Also mark the locations of the hinges on the thickness of the outside edge of the lid, the locations of the hinges when the lid is closed position. Attach one side of the hinge to K with the 1/2" hardware. Measure the width of the hinge. Draw a line on the underside of piece A, along the long edge, at a distance of 3/4" plus the width of the hinge, from the edge. Attach the hinge to A so that when closed, the edges of A overlap K 3/4" on all sides. Attach the slow closing lid hardware. Glue on the cork bumpers to front corners of lid to prevent the lid from banging when closed.
- 7) Sand and stain project to manufacturer's instructions and allow to dry. Do not stain the backgammon chess board. Fill exposed nail holes with wood putty. Apply a final finish to the project, or use the manufacturer's recommendation of varnish or oil for the final finish. We

**On materials:**

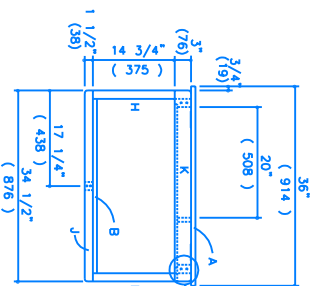
Use top quality materials for this project, entirely free of knots on the 2x4 and 1x4. This will turn out to be a very polished looking project.

**TOOLS**

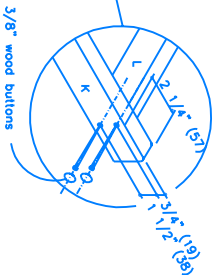
- Table Saw and Jigsaw
- Pencil and Measuring Tape
- Power or Hand Drill
- 1/16", 1/8", 3/8" drill bits
- Hammer and Screwdrivers
- Square and Nail Set
- Walter Box and Wood Chisels
- Compass
- Paint Brush and Putty Knife



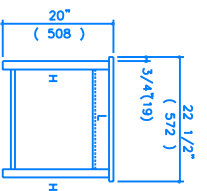
**COMPLETED PROJECT**



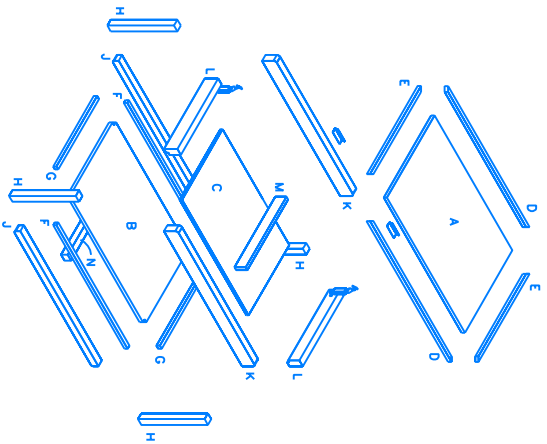
**FIGURE 5**



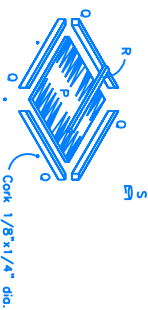
**3/8" wood buttons**



**FIGURE 7**



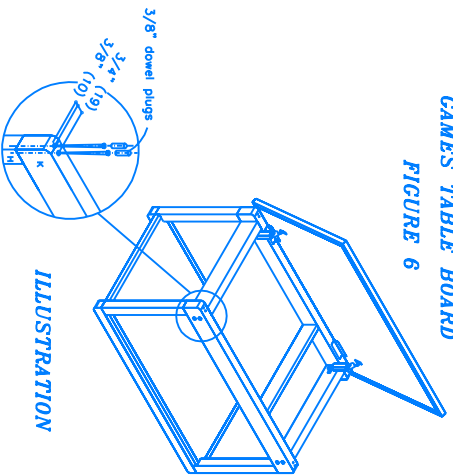
**GAMES TABLE BOARD  
FIGURE 6**



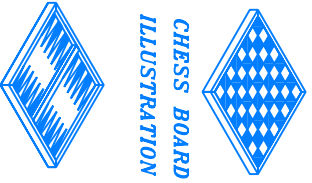
**BACKGAMMON BOARD  
FIGURE 8**



**CHESS BOARD  
FIGURE 9**



**ILLUSTRATION**



**CHESS BOARD  
ILLUSTRATION**

**BACKGAMMON BOARD  
ILLUSTRATION**